

Our Council Plan 2024 to 2027



Barnsley – the place of possibilities.

Welcome

This is our Council Plan for 2024 to 2027.

We've created our plan based on our fundamental purpose of working together with our communities and organisations, including the public, voluntary, community, and private sectors, to make Barnsley the place of possibilities.

At Barnsley, we work together with our communities to make Barnsley a place of possibilities.

You're reading our second Council Plan aligned with Barnsley's 2030 vision. It shows how we're contributing to making it a reality. By the end of this plan, we'll be three-quarters towards achieving our ambitions. We're taking stock with partners, reflecting on the changes in our communities and where we need to focus our collective efforts.

The national and global backdrop remains challenging. We'll not let these challenges hold Barnsley back.

Our plan sets out our commitment to improving the borough for everyone. If you love Barnsley as much as we do, you'll be keen to learn about our work and what we want to achieve by 2027 and beyond.

Read on to find out more.



Leader of the Council
Cllr Sir Steve Houghton CBE



Chief Executive
Sarah Norman



Volunteers at New Lodge Village Green



A Community Pantry in the Central area



Volunteers from Penistone at Celebration Event

Our story so far

We've made great progress in our ambition for Barnsley to be the place of possibilities. **In 2023, we made history by winning not one but two Council of the Year awards.** Recognised for our investments in The Glass Works, our principal towns and local village centres, Health on the High Street and our culture and visitor offer, while delivering high quality services across the borough.

Our children continue to make a great start in their education from early years onwards. We're ambitious for all our children and young people and work closely with settings and schools, this has **resulted in attainment above the national average in reading, writing and maths, improving year on year in Key Stage 1 and 2.** In 2023, our Children's Social Care services were rated Good by Ofsted. It's an extraordinary achievement against a backdrop of increasing demand and spiralling costs.

Our Adult Social Care service is resilient and stable, working in close partnership with our health partners to deliver quality services despite high demand and challenges in the sector. **We're national leaders, ranked first for people saying our services have made them feel safe and secure,** and second for people being satisfied with their care and support.

Our Public Health service delivers health protection initiatives that make a real difference such as 'How's Thi Ticker'. Our Communities teams remain our strength and we're immensely proud of the work of our volunteers and community groups across the borough and the positive impact of our Area Councils and Ward Alliances.

We have a strong set of Core services supporting the council to be effective, productive and to deliver best value in our services. We have the right governance and assurance in place to keep the council safe. At a time of financial uncertainty this is an incredible achievement and one we hope you are as proud of as we are.



Frontline workers at Smithies Lane Depot



"How's Thi Ticker" session at the Rainbow Community Centre in Thurnscoe



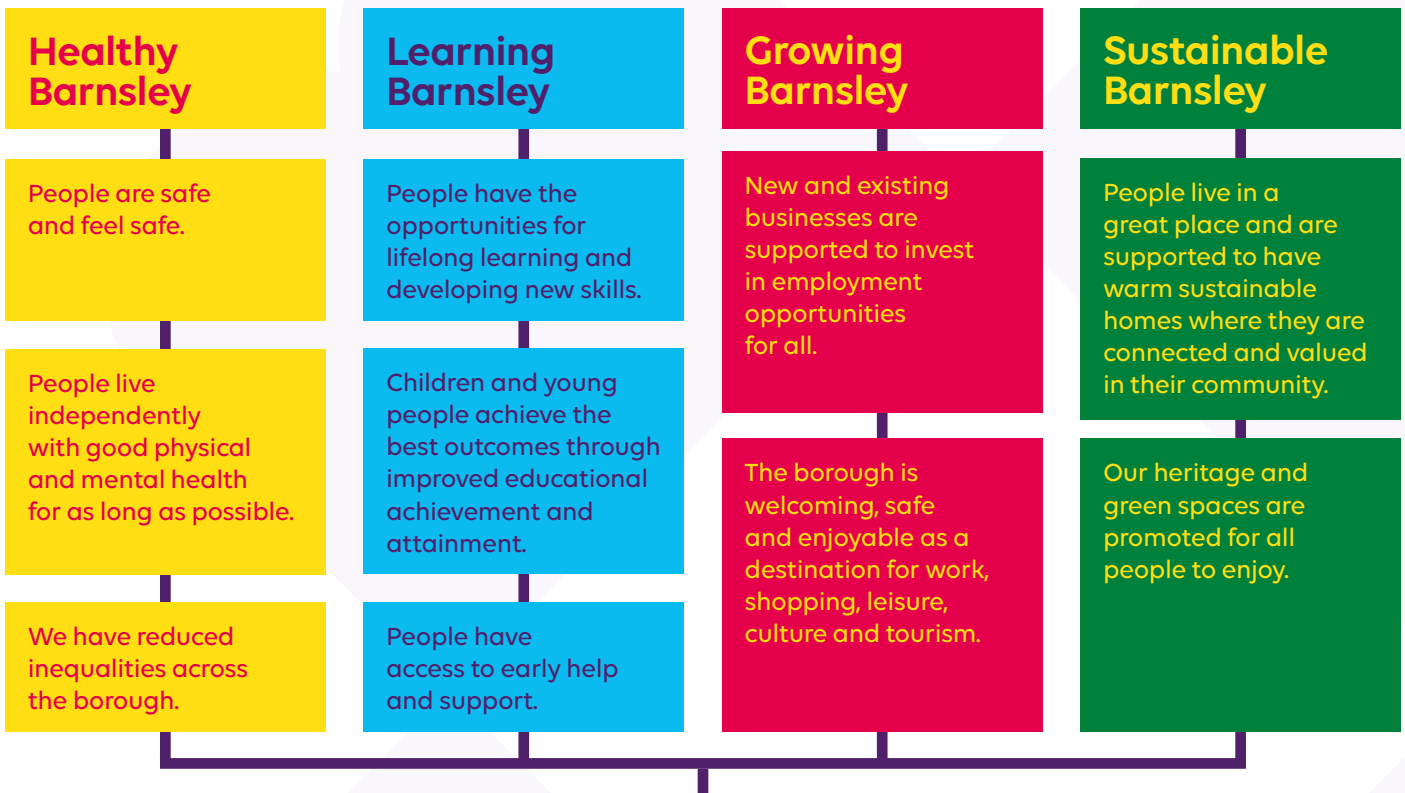
Children's Services receive Good Ofsted

Our Council Plan

Our vision, priorities and values are the guiding force behind our Council Plan. They're all entwined together to help Barnsley become a place of possibilities.

Our vision Barnsley – the place of possibilities

Our priorities and outcomes



Enabling Barnsley Be bold. Be brave. Be innovative.

Enabling Barnsley connects our vision, values and behaviours, so that we all understand and share the same goal. It's how we use digital tools to get the best results. It's how we make the most of our buildings and resources, and explore alternative ways to deliver our services, ensuring we achieve value for money in everything we do.

Our values



Our journey for the next three years

We'll focus on our priorities and continue to make brave investments in our borough.

Healthy Barnsley

Health on the High Street builds on the success of our trailblazing NHS Community Diagnostic Centre. We'll transform parts of our Alhambra Shopping Centre into a health and wellbeing hub, welcoming a range of services including some outpatient services from Barnsley Hospital. We'll continue to design integrated approaches to health and care through **Barnsley's Health and Care plan**.

We'll continue in collaboration with our partners to implement local public health initiatives across the borough to tackle local health inequalities, like our **How's Thi Ticker** and our involvement in the **Yorkshire Smokefree Barnsley** campaign.



Barnsley Community Diagnostic Centre

Learning Barnsley

We want our children to have the best start in life. Our enrichment programme, **Great Childhoods made possible**, aims to give our children the opportunities and experiences they deserve.

We've secured funding for the **Northern Academy for Vocal Excellence (NAVE)** which will host the Barnsley Youth Choir in the former Council Computer centre and until 1970 was the town's courthouse. Situated behind the town hall on the corner of St Mary's Place and Westgate. Not only will this funding enable the choir's exciting and ambitious vision but also provide enhanced opportunities for young people within the borough and the wider regional area.

The development of the **Barnsley Youth Zone** will provide a safe and aspirational place for young people. Hosting first class facilities in sports, arts, performance and enterprise. Skilled youth workers will offer over 20 different activities to try and will support young people to realise their own aims and achievements. Located in an exciting new building close to the train station and bus interchange it will be accessible to young people across the borough.



Great childhoods made possible

Growing Barnsley

During the next three years, we'll establish a national centre of excellence for digital and artificial intelligence technologies to prepare our businesses and residents for the future and provide our workforce with the right skills for the next digital revolution. We'll enhance the use of the Seam Digital Campus alongside town centre growth to fulfil its potential as a hub for research, development and collaboration between businesses, academia and government.

We'll ensure that the Glass Works drives our town centre growth. Nearly 90% of our commercial units are now occupied and town centre footfall is increasing annually beyond the regional averages. Our **Glass Works Board** continues to consider and support each new tenant, ensuring that we are providing a range of offers to our customers and support the longevity of new tenants.

We continue with our **Principal Towns and Local Village Centres investment programme**, ensuring that we're improving our commercial offer and supporting new and existing businesses to thrive in our local high streets. Together we'll promote our Principal Towns and Local Village Centres as places to grow where people choose to live, work and visit and to provide a safe and pleasant shopping experience for everyone.

We want to prepare young people and people not in employment for rewarding and sustainable work via our **Pathways to Work programme**. It's an ambitious plan that aims to level the playing field by understanding the challenges that people face when getting into work.



The Glass Works
Barnsley

Sustainable Barnsley

Activity levels of both adult and children will always be a priority. We're working with partners such as Sport England to ensure that every person feels supported to maintain a healthy and active lifestyle, this is supported by our commitment to build on the 11km of active travel routes across the borough so that everyone has accessible routes for walking and cycling.

Our **A61 active travel scheme** focuses on enhancing connectivity, improving active travel and healthier lifestyles for residents and visitors and will provide a continuous four-mile walking, wheeling and cycling route from the transport interchange in town through to Royston, one of our Principal Towns.

We believe that everyone should be supported to have warm homes, this is supported by our commitment to maintaining our decent homes standard where 100% of homes must be safe and welcoming. We want to help organisations work together to make sure our residents are living in warm, healthy, energy-efficient homes. We'll continue with the implementation of our **Affordable Warmth initiatives** bringing together partner organisations across the borough together to share knowledge, expertise and resources on tackling the health inequalities caused by fuel poverty.



Cannon Hall
gardens



Alhambra Shopping Centre



Active Travel – Transpennine Trail



Warm Homes drop in

How we'll deliver our plan

Our Organisation

We're bold, brave, and innovative, and Enabling Barnsley is our driver. It connects our vision, values and behaviours so that we all understand and share the same goal. It's how we use digital tools to get the best results. It's how we make the most of our buildings and resources, and deliver services in ways that get the best value out of everything we do.

Our People Strategy brings to life our culture and behaviours. It supports a modern, inclusive, diverse, agile, healthy, engaged, skilled and innovative workforce. It will help us to become a digital leader, giving our employees the skills and confidence to use innovative technologies and help Barnsley become a digital enabled, inclusive economy.

The financial position in local government is very challenging. **Our Medium-Term Financial Strategy is a vital tool in understanding our financial position and planning for the future.** Our strong management of resources and good spending decisions mean we're in a more favourable position than many councils in the region. However, we must make sure we deliver the best value for money, and that our resources deliver the highest priorities for residents, partners and businesses.

Improving and transforming our services is essential to us, and it's not something we see as a one-time event. As a high-performing council, we are critical in our thinking and actions, using data to spot and exploit opportunities for bold and brave ways of doing things.

We're working with our partners at Microsoft UK to revolutionise the way we use digital systems and tools to deliver maximum value for money. We're one of the first early adopters of Microsoft Copilot, making us pioneers in the use of AI technology in local government.

Our Governance Assurance Framework gives us the space to be agile and bold, making sure we're well-managed and responsible.

Barnsley is a place with incredible achievements and enormous potential. Our Communications and Marketing Strategy drives our reputation. It aims to transform people's understanding of Barnsley, the council and the services we provide.

We take pride in being an inclusive employer. We're working hard to make Barnsley a place where all communities can come together and thrive.

Working with our partners

We can't make our vision a reality on our own. Barnsley 2030 guides our approach as a place and we'll work with partners in a shared endeavour to deliver services that Barnsley needs. We want any wealth created in the borough to stay here, sharing the benefits of our economy with everyone and using our natural resources sustainably.

Our Inclusive and Sustainable Economy Framework will shape and influence all our decision-making and future investments. We'll encourage our partners to adopt a similar co-designed approach.

How will we measure our success?

Our **Critical Success Factors** will measure our performance in each of our priorities and deliver those outcomes for the borough. We review our progress through quarterly reviews with officers, councillors, and our residents. We have great stories to tell about the positive impact we're making in our communities.

We publish some of our stories on our social media accounts.

You can read more on our **'How we measure performance' web page**.



Pathways to Work Commission



Horse and Groom Square at Goldthorpe

Thank you for your support and reading our Council Plan

Please visit [barnsley.gov.uk](https://www.barnsley.gov.uk) to find out more.

f @BarnsleyCouncil

in @barnsley-mbc

@ @BarnsleyCouncilOfficial

▶ @BarnsleyCouncilOfficial

Barnsley – the place of possibilities.



BARNSELY
Metropolitan Borough Council