

0-19 Public Health Nursing Service
Jane Fleming,
Healthy Child Programme Lead
Health Visitor Practice Teacher.



20
30

Barnsley – the place
of possibilities.



BARNSLEY
Metropolitan Borough Council

Universal Teams



20
30

Barnsley – the place of possibilities.

BARNLSLEY
Metropolitan Borough Council

0-19 Public Health Nursing Service

6 Area teams made up of:-

Healthy Child Programme Lead (HCPL)
Specialist Community Public Health Nurse's (SCPHN) Health Visitors & School Nurses
Public Health Nurses & Midwives (Adult & Children's trained)
Child development practitioners (Nursery Nurse qualified)
Public health support workers.
Student SCPHNs / Pre reg nursing students through partnership with Sheffield Hallam University.

Specialist Safeguarding Team (Partnership Plus Team, MASH, Gypsy, Traveller and Asylum Seeker SCPHN HV, Children in Care team)

Infant Feeding Service

System one development team (S1 Health Records)

**20
30**

Barnsley – the place
of possibilities.



BARNSELY
Metropolitan Borough Council

0-19 Public Health Nursing Service Demographics

- **Children in Barnsley registered with 0-19 Public Health Nursing Service - 53,149 (Nov 2021)**
- **53,149 receive a Universal level of service - U**
- **1,408 receive a Universal Plus level of service - UP**
- **1078 receive a Universal Partnership Plus level of service- UP**
- **Schooling in / Living out 733**
- **Living in/ Schooling out 1360**



Barnsley – the place
of possibilities.



BARNSELY
Metropolitan Borough Council

Penistone Locality

- **The local 0-19 Public Health Nursing Service Team**
- **X1 Team leader**
- **x3Health Visitors**
- **x1School Nurse (link to 11 schools across the area)**
- **X2 Public Health Nurses**
- **X3 Child Development Practitioners (link to every Early Years setting across the area)**
- **X1 Public Health Support Worker**

- **4,908 children receive a Universal level of service - U**
- **106 receive a Universal Plus level of service - UP**
- **Universal Partnership Plus level of service- UP (these transfer to our safeguarding or children in care team)**
- **Schooling in / Living out 187**
- **Living in/ Schooling out 186**

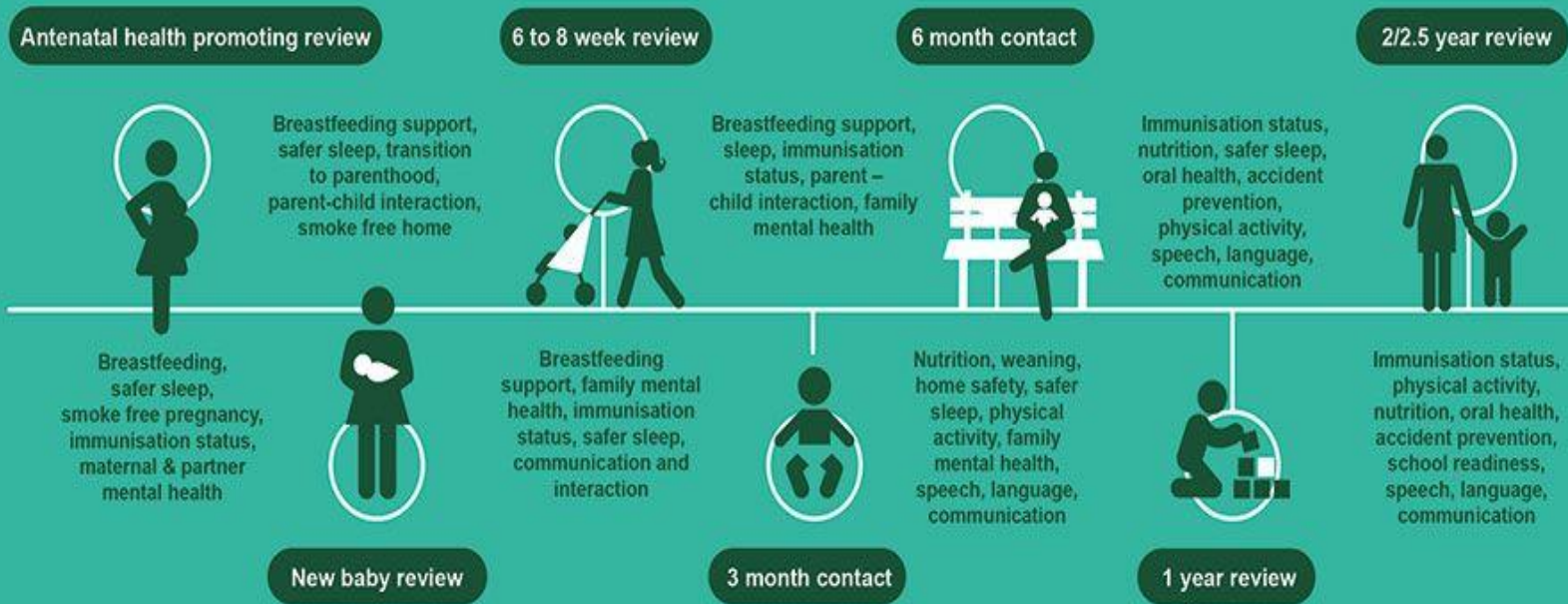


**Barnsley – the place
of possibilities.**

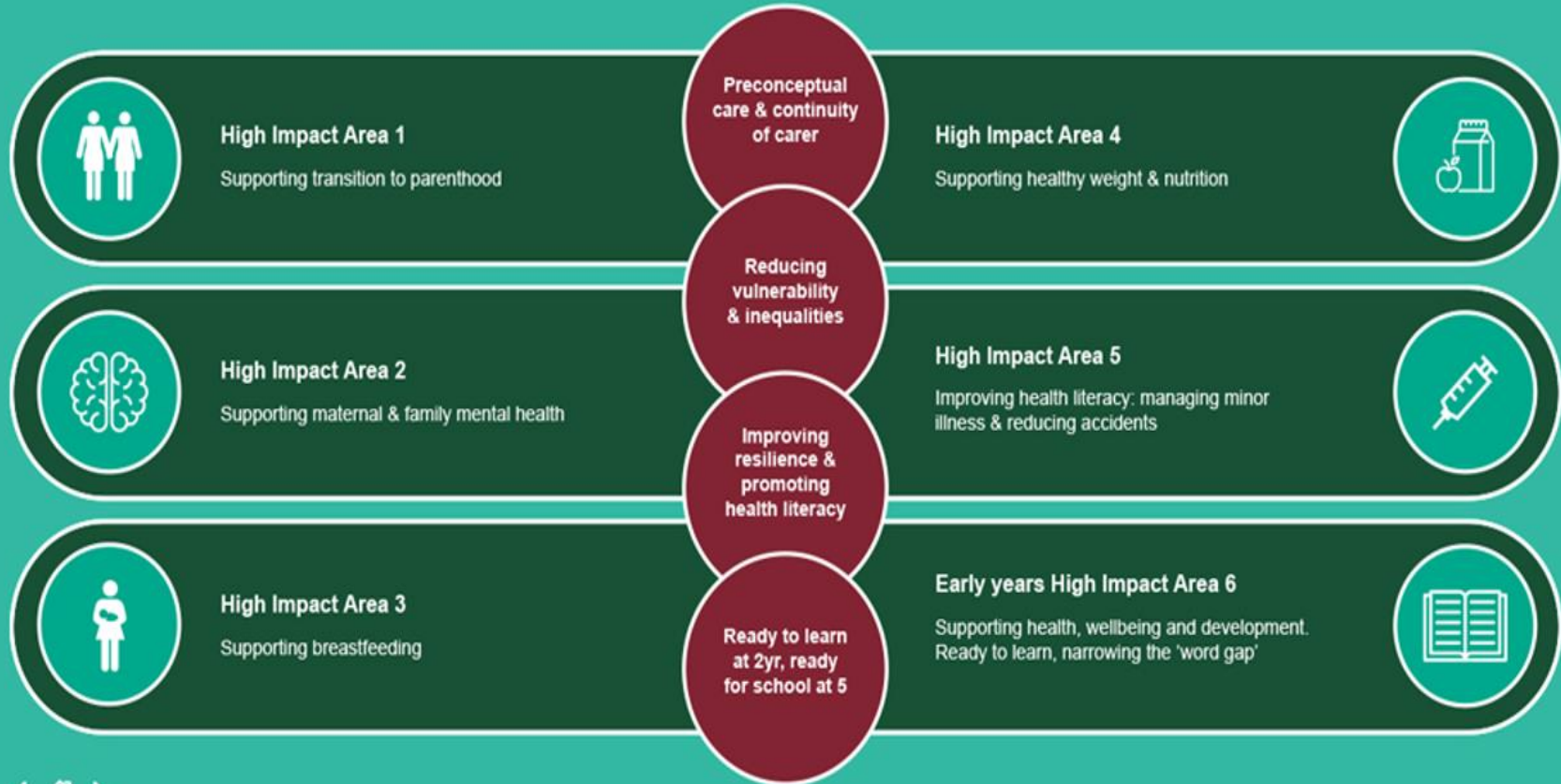


BARNSLEY
Metropolitan Borough Council

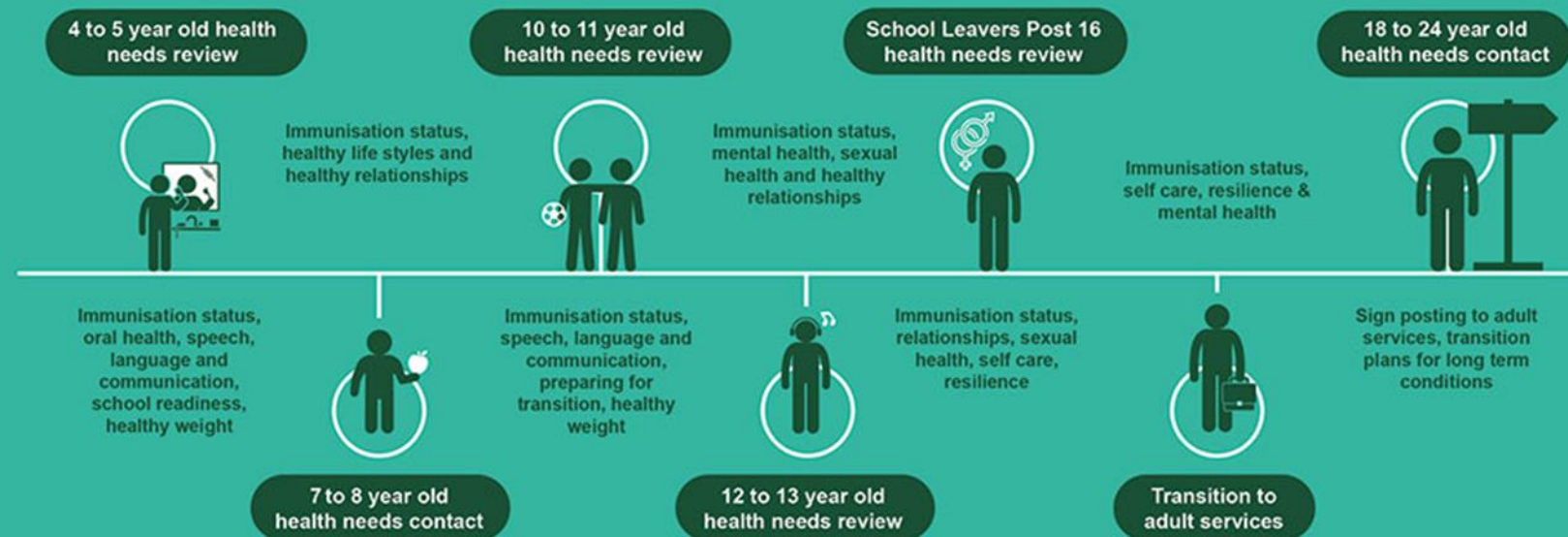
Health and wellbeing reviews and contacts for 0-5



High Impact Areas for early years



Health and wellbeing reviews and contacts for 5-24



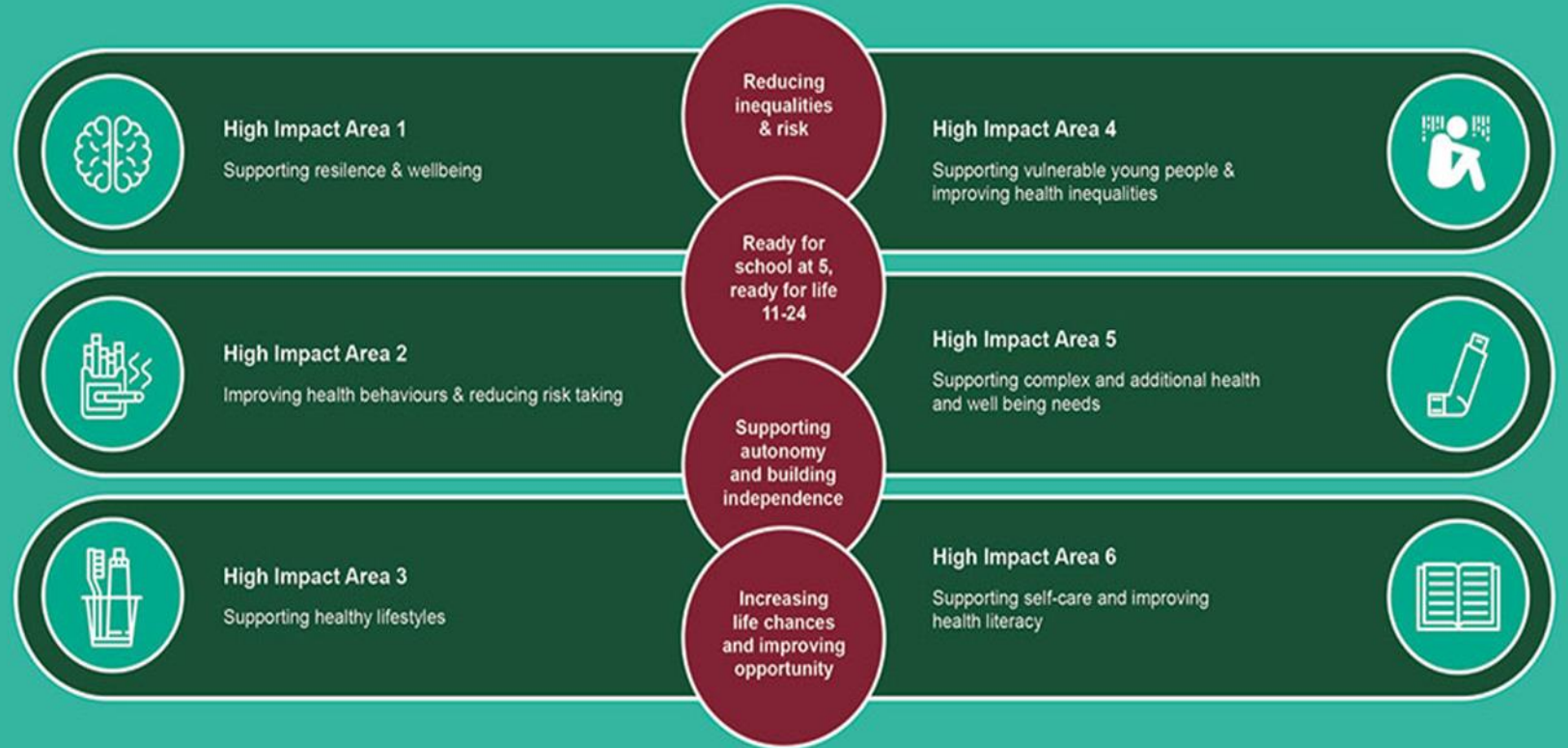
**20
30**

Barnsley – the place
of possibilities.



BARNSELY
Metropolitan Borough Council

High Impact Areas for school age years



20
30

Barnsley – the place
of possibilities.



BARNLSLEY
Metropolitan Borough Council

What is a Health Needs Assessment?

Family Dynamics/ support/ relationships.

Feeding/ Nutrition

Growth/Development

Physical/Mental Health

Immunisations

Specific / complex Health Needs

Attachment/ Attunement

Vulnerability factors eg Teenage parent, complex mental health, substance misuse, domestic violence.

Culture/Language

Risk Assessment eg past history, previous involvement with services

Sexual Health & risk taking behaviour

Home Environment

Education/ employment



Barnsley – the place
of possibilities.



BARNSLEY
Metropolitan Borough Council

Examples of work we do



20
30

Barnsley – the place of possibilities.



BARNSELY
Metropolitan Borough Council

Who do we work with?

- Schools/ EWO
- CAMHS
- Compass Be
- Chilypep
- GPs
- SYEDA
- Hospital services
- Sexual Health
- Social Care
- Midwives
- Family centres
- Public Health Partners within BMBC
- Targeted Youth Services
- Substance Misuse
- Youth Offending
- Police



Targeted Support

The Health Needs Assessment identifies any unmet health needs:

If a specific relevant role is identified for the 0-19 service we will remain involved to provide Targeted Support.

OR

We may signpost or refer to other relevant specialist services

Right person at the right time with the child central at all times

20
30

Barnsley – the place
of possibilities.



BARNSELY
Metropolitan Borough Council

How to contact us

[Email- 0-19HealthTeam@barnsley.gov.uk](mailto:0-19HealthTeam@barnsley.gov.uk)

[-Single Point of Access\(SPA\) 01226 774411](tel:01226774411)



[- Barnsley0-19Public Health Nursing Service](#)



Microsoft Word
7 - 2003 Documer

**20
30**

Barnsley – the place
of possibilities.



BARNSELY
Metropolitan Borough Council

Any Questions
???

20
30

Barnsley – the place
of possibilities.



BARNSLEY
Metropolitan Borough Council